



CENTER FOR FINANCIAL STABILITY

Dialog • Insight • Solutions

NEWS RELEASE

EMBARGOED UNTIL RELEASE AT 9:00 A.M. EST, WEDNESDAY, NOVEMBER 21, 2012.

CFS Divisia Monetary Data for the United States:¹ OCTOBER 2012

The CFS Featured Broad Divisia Monetary Aggregates in October 2012

- CFS Divisia M4, including Treasuries (DM4) – the broadest and most important measure of money calculated by the Center for Financial Stability – grew by 4.4% in October 2012, on a year-over-year basis. In contrast, CFS Divisia M4 increased by 0.2% in October 2011 over the preceding year.
- The narrower version of the CFS Divisia M4, excluding Treasuries, (DM4-), increased by 3.9% in October 2012 over the year, relative to a year-over-year gain of 2.2% in October 2011.
- CFS Divisia M3 (DM3) advanced by 4.5% year-over-year, relative to an increase of 2.7% in October 2011.

The Narrow Divisia Monetary Aggregates in October 2012²

- CFS Divisia M2 (DM2) advanced by 7.5% year-over-year, relative to an increase of 9.8% in October 2011 over the preceding year.
- CFS Divisia M1 (DM1) advanced by 12.5% year-over-year, relative to an increase of 14.2% in October 2011 over the preceding year.

Most Significant Factors Influencing CFS Divisia M4 in October 2012

Positive Contributors to CFS Divisia M4 Growth

- The largest positive contributor to CFS Divisia M4 growth was commercial banks' savings deposits (sweeps adjusted), contributing an increase of 2.7% in the last 12 months ending October 2012. Their growth-rate weight was 26.8%. Unweighted, they increased 10.7% in the last 12 months. This component is included in all of the aggregates, except the narrowest (DM1).
- The second largest positive contributor to growth was demand deposits (sweeps adjusted), contributing an increase of 1.5% in the last 12 months ending October 2012. Their growth-rate weight was 8.1%. Unweighted, they increased 19.4% in the last 12 months. This component is included in all of the aggregates.
- The third largest positive contributor to growth was T-bills, contributing an increase of 0.9% in the last 12 months ending October 2012. Their growth-rate weight was 9.4%. Unweighted, they increased 9.5% in the last 12 months. This component is included only in the broadest aggregate (DM4).

¹ The CFS Divisia indexes in this release were constructed under the direction of Professor William A. Barnett. Dr. Barnett is the originator of the Divisia monetary aggregates, which he has been developing and refining for decades, in accordance with modern advances in economic aggregation and index-number theory.

² The narrow aggregates, DM1 and DM2, are similar to the MSI (monetary services index) Divisia aggregates, supplied by the St. Louis Federal Reserve Bank. See page 18 for the relationship between the CFS and the MSI aggregates. The broad Divisia monetary aggregates, DM3, DM4-, and DM4, are available only from the CFS, since no other source currently exists for broad Divisia monetary aggregates for the US.

© Center for Financial Stability 2012. All rights reserved.



CENTER FOR FINANCIAL STABILITY

Dialog • Insight • Solutions

Negative Contributors to CFS Divisia M4 Growth

- The largest negative contributor to CFS Divisia M4 growth was commercial banks' small time deposits, contributing a decrease of 0.5% in the last 12 months ending October 2012. Their growth-rate weight was 2.9%. Unweighted, they decreased 14.7% in the last 12 months. This component is included in all of the aggregates, except the narrowest (DM1).
- The second largest negative contributor to CFS Divisia M4 growth was commercial paper, contributing a decrease of 0.3% in the last 12 months ending October 2012. Its growth-rate weight was 5.3%. Unweighted, it decreased 5.0% in the last 12 months. This component is included in DM4 and DM4-, but not in the narrower aggregates.
- The third largest negative contributor to CFS Divisia M4 growth was retail money-market funds, contributing a decrease of 0.3% in the last 12 months ending October 2012. Their growth-rate weight was 3.9%. Unweighted, they decreased 6.7% in the last 12 months. This component is included in all of the aggregates, except the narrowest (DM1).

Contents

Page

Figure 1 - Recent Growth in Broad CFS Divisia Monetary Data	3
Figure 2 - Recent Growth in Narrow CFS Divisia Monetary Data	3
Figure 3 - CFS Divisia Monetary Aggregates Table, Year-Over-Year Percent Change	4
Figure 4 - CFS Divisia Data Table (DM4, DM4-, and DM3)	5
Figure 5 - CFS Divisia Data Table (DM2 and DM1)	6
Figure 6 - Components of CFS Divisia M4 - Highlights for October 2012	7
Figure 7 - CFS Divisia Monetary Growth Charts	8
Figure 8 - CFS Divisia Monetary Aggregates Level Charts	9
Figure 9 - Components of All CFS Divisia Aggregates	10
Figure 10 - Components of CFS Divisia M4 - Highlights for October 2012	11
Figure 11 - Components of CFS Divisia M4 (Asset Levels in Billions of Dollars)	12
Figure 12 - Components of CFS Divisia M4 (Year-Over-Year Growth Rates)	13
Figure 13 - CFS Divisia M4 Growth-Rate Weights	14
Figure 14 - Weighted Contributions to Divisia M4 Growth (12-Month Moving Average)	15
Figure 15 - Unweighted Components of CFS Divisia M4 (Year-Over-Year Growth Rates)	16
Figure 16 - CFS Divisia M4 Quarterly Growth Triangle	17
Introduction to CFS Divisia Monetary Aggregates	18
CFS Divisia Resources on the Center for Financial Stability Site	19
About the Center for Financial Stability	19
CFS Divisia Contacts	19

The next CFS Divisia M4 data are scheduled to be released at 9:00 AM EST on Wednesday, December 19, 2012.



CENTER FOR FINANCIAL STABILITY

Dialog • Insight • Solutions

Figure 1 - Recent Growth in Broad CFS Divisia Monetary Data³

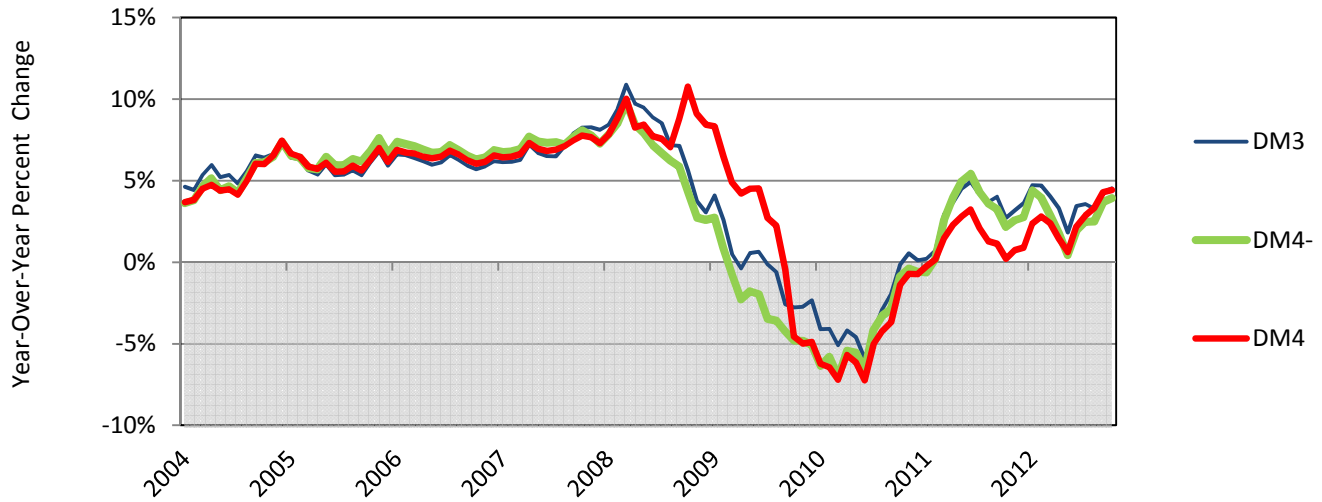
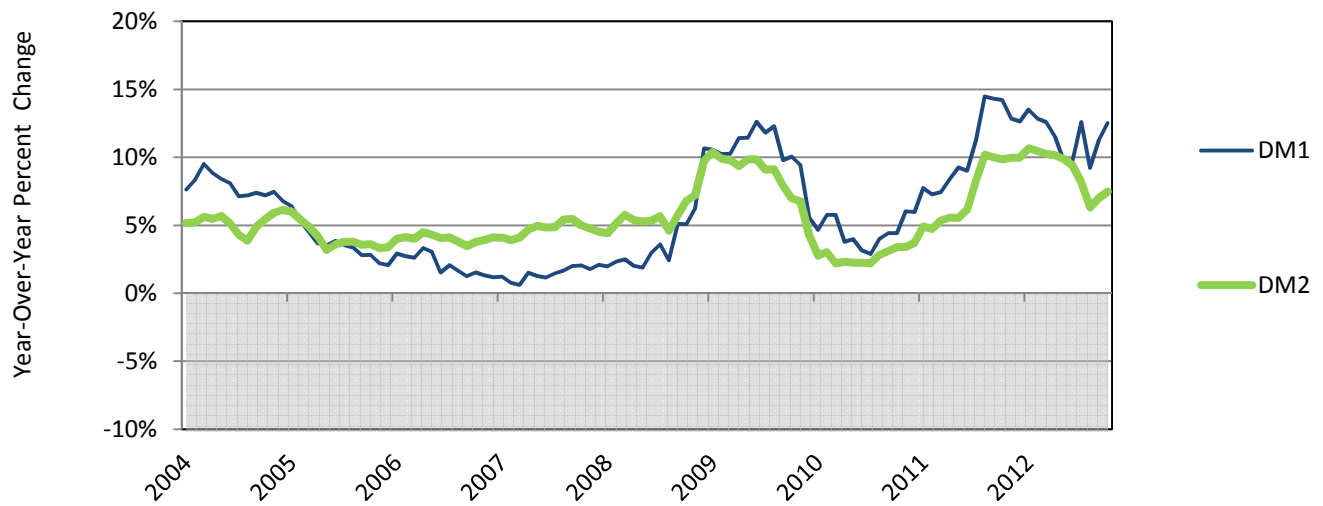


Figure 2 - Recent Growth in Narrow CFS Divisia Monetary Data⁴



³ The broadest CFS Divisia monetary aggregates are **best** for most purposes. See p. 18 for background on the supporting research. We nevertheless provide the narrower CFS Divisia aggregates in Figure 2 for comparison.

⁴ The narrow aggregates shown here, DM1 and DM2, are similar to the MSI (monetary services index) Divisia aggregates, supplied by the St. Louis Federal Reserve Bank. For more information about the St. Louis Fed's MSI Divisia aggregates and their relationship to the CFS Divisia monetary aggregates, see p. 18.



CENTER FOR FINANCIAL STABILITY

Dialog • Insight • Solutions

Figure 3 - CFS Divisia Monetary Aggregates Table, Year-Over-Year Percent Change

Date	Divisia M4 Including Treasuries (DM4)	Divisia M4 Excluding Treasuries (DM4-)	Divisia M3	Divisia M2 (Sweeps Adjusted) ⁵	Divisia M1 (Sweeps Adjusted) ⁵
Jan-10	-6.2%	-6.3%	-4.1%	2.8%	4.7%
Feb-10	-6.4%	-5.8%	-4.1%	3.0%	5.8%
Mar-10	-7.2%	-7.0%	-5.1%	2.2%	5.8%
Apr-10	-5.7%	-5.4%	-4.2%	2.3%	3.8%
May-10	-6.1%	-5.6%	-4.6%	2.2%	4.0%
Jun-10	-7.3%	-6.6%	-5.9%	2.2%	3.1%
Jul-10	-5.0%	-4.2%	-4.3%	2.2%	2.9%
Aug-10	-4.2%	-3.3%	-2.9%	2.8%	4.0%
Sep-10	-3.7%	-2.9%	-1.9%	3.1%	4.4%
Oct-10	-1.4%	-0.9%	-0.1%	3.4%	4.4%
Nov-10	-0.7%	-0.4%	0.5%	3.4%	6.0%
Dec-10	-0.7%	-0.6%	0.1%	3.7%	6.0%
Jan-11	-0.3%	-0.6%	0.2%	4.9%	7.7%
Feb-11	0.2%	0.2%	0.7%	4.7%	7.3%
Mar-11	1.5%	2.6%	2.9%	5.3%	7.4%
Apr-11	2.3%	4.0%	3.7%	5.6%	8.4%
May-11	2.8%	5.0%	4.5%	5.5%	9.3%
Jun-11	3.2%	5.4%	4.9%	6.2%	9.0%
Jul-11	2.1%	4.3%	4.2%	8.3%	11.3%
Aug-11	1.3%	3.6%	3.7%	10.2%	14.5%
Sep-11	1.1%	3.3%	4.0%	10.0%	14.3%
Oct-11	0.2%	2.2%	2.7%	9.8%	14.2%
Nov-11	0.8%	2.6%	3.2%	10.0%	12.9%
Dec-11	0.9%	2.8%	3.6%	10.0%	12.6%
Jan-12	2.4%	4.4%	4.7%	10.7%	13.5%
Feb-12	2.8%	4.0%	4.7%	10.5%	12.9%
Mar-12	2.4%	2.9%	4.0%	10.3%	12.6%
Apr-12	1.4%	1.7%	3.3%	10.1%	11.5%
May-12	0.6%	0.4%	1.8%	9.9%	9.7%
Jun-12	2.2%	1.9%	3.4%	9.4%	9.7%
Jul-12	2.9%	2.5%	3.6%	8.2%	12.6%
Aug-12	3.3%	2.5%	3.3%	6.3%	9.2%
Sep-12	4.3%	3.7%	4.3%	7.0%	11.3%
Oct-12	4.4%	3.9%	4.5%	7.5%	12.5%

Note: Cells are shaded on a gradient from dark green (maximum) to dark red (minimum).

⁵ While the broadest Divisia monetary aggregates are best for most purposes, we provide the narrower CFS Divisia aggregates for comparison. The narrow aggregates shown here, DM1 and DM2, are similar to the MSI (monetary services index) Divisia aggregates, supplied by the St. Louis Federal Reserve Bank. For more information about the St. Louis Fed's MSI Divisia aggregates and their relationship to the CFS Divisia monetary aggregates, see p. 18.



CENTER FOR FINANCIAL STABILITY

Dialog • Insight • Solutions

Figure 4 - CFS Divisia Data Table (DM4, DM4-, and DM3)

Levels are normalized to equal 100 in Jan. 1967

Date	Divisia M4 Including Treasuries (DM4)			Divisia M4 Excluding Treasuries (DM4-)			Divisia M3		
	Level	Yr-Over-Yr % Growth Rate	Interest-Rate Aggregate %	Level	Yr-Over-Yr % Growth Rate	Interest-Rate Aggregate %	Level	Yr-Over-Yr % Growth Rate	Interest-Rate Aggregate %
Jan-10	1,211	-6.2%	0.13%	1,116	-6.3%	0.14%	1,091	-4.1%	0.14%
Feb-10	1,203	-6.4%	0.14%	1,114	-5.8%	0.15%	1,089	-4.1%	0.14%
Mar-10	1,194	-7.2%	0.15%	1,098	-7.0%	0.15%	1,074	-5.1%	0.15%
Apr-10	1,198	-5.7%	0.17%	1,099	-5.4%	0.17%	1,076	-4.2%	0.16%
May-10	1,203	-6.1%	0.20%	1,104	-5.6%	0.21%	1,083	-4.6%	0.19%
Jun-10	1,186	-7.3%	0.21%	1,088	-6.6%	0.22%	1,067	-5.9%	0.20%
Jul-10	1,201	-5.0%	0.20%	1,103	-4.2%	0.20%	1,081	-4.3%	0.19%
Aug-10	1,207	-4.2%	0.17%	1,110	-3.3%	0.17%	1,088	-2.9%	0.16%
Sep-10	1,208	-3.7%	0.16%	1,111	-2.9%	0.16%	1,087	-1.9%	0.15%
Oct-10	1,219	-1.4%	0.15%	1,122	-0.9%	0.15%	1,100	-0.1%	0.14%
Nov-10	1,216	-0.7%	0.14%	1,120	-0.4%	0.14%	1,100	0.5%	0.14%
Dec-10	1,211	-0.7%	0.14%	1,114	-0.6%	0.14%	1,095	0.1%	0.14%
Jan-11	1,208	-0.3%	0.14%	1,109	-0.6%	0.14%	1,093	0.2%	0.13%
Feb-11	1,205	0.2%	0.14%	1,115	0.2%	0.14%	1,097	0.7%	0.13%
Mar-11	1,212	1.5%	0.13%	1,127	2.6%	0.13%	1,105	2.9%	0.12%
Apr-11	1,225	2.3%	0.11%	1,143	4.0%	0.11%	1,115	3.7%	0.11%
May-11	1,237	2.8%	0.10%	1,159	5.0%	0.11%	1,132	4.5%	0.10%
Jun-11	1,225	3.2%	0.10%	1,147	5.4%	0.11%	1,119	4.9%	0.10%
Jul-11	1,226	2.1%	0.10%	1,150	4.3%	0.10%	1,125	4.2%	0.10%
Aug-11	1,223	1.3%	0.11%	1,150	3.6%	0.11%	1,128	3.7%	0.11%
Sep-11	1,221	1.1%	0.11%	1,147	3.3%	0.12%	1,130	4.0%	0.11%
Oct-11	1,221	0.2%	0.11%	1,146	2.2%	0.12%	1,130	2.7%	0.11%
Nov-11	1,225	0.8%	0.12%	1,149	2.6%	0.13%	1,135	3.2%	0.12%
Dec-11	1,222	0.9%	0.12%	1,145	2.8%	0.13%	1,134	3.6%	0.13%
Jan-12	1,237	2.4%	0.12%	1,158	4.4%	0.13%	1,145	4.7%	0.12%
Feb-12	1,239	2.8%	0.12%	1,160	4.0%	0.12%	1,148	4.7%	0.12%
Mar-12	1,241	2.4%	0.12%	1,159	2.9%	0.13%	1,150	4.0%	0.12%
Apr-12	1,243	1.4%	0.12%	1,163	1.7%	0.13%	1,152	3.3%	0.12%
May-12	1,245	0.6%	0.12%	1,164	0.4%	0.13%	1,152	1.8%	0.12%
Jun-12	1,252	2.2%	0.13%	1,169	1.9%	0.13%	1,158	3.4%	0.12%
Jul-12	1,261	2.9%	0.12%	1,179	2.5%	0.12%	1,166	3.6%	0.12%
Aug-12	1,263	3.3%	0.11%	1,178	2.5%	0.11%	1,165	3.3%	0.11%
Sep-12	1,274	4.3%	0.11%	1,190	3.7%	0.11%	1,179	4.3%	0.11%
Oct-12	1,276	4.4%	0.11%	1,191	3.9%	0.11%	1,181	4.5%	0.11%



CENTER FOR FINANCIAL STABILITY

Dialog • Insight • Solutions

Figure 5 - CFS Divisia Data Table (DM2 and DM1)

Levels are normalized to equal 100 in Jan. 1967

Date	Divisia M2 (Sweeps Adjusted)			Divisia M1 (Sweeps Adjusted)		
	Level	Yr-Over-Yr % Growth Rate	Interest-Rate Aggregate %	Level	Yr-Over-Yr % Growth Rate	Interest-Rate Aggregate %
Jan-10	970	2.8%	0.15%	1,202	4.7%	0.03%
Feb-10	976	3.0%	0.14%	1,212	5.8%	0.03%
Mar-10	976	2.2%	0.13%	1,216	5.8%	0.03%
Apr-10	979	2.3%	0.13%	1,211	3.8%	0.03%
May-10	985	2.2%	0.13%	1,213	4.0%	0.03%
Jun-10	987	2.2%	0.12%	1,222	3.1%	0.03%
Jul-10	987	2.2%	0.12%	1,223	2.9%	0.03%
Aug-10	991	2.8%	0.12%	1,233	4.0%	0.03%
Sep-10	995	3.1%	0.11%	1,243	4.4%	0.03%
Oct-10	1,001	3.4%	0.10%	1,250	4.4%	0.03%
Nov-10	1,005	3.4%	0.10%	1,272	6.0%	0.03%
Dec-10	1,010	3.7%	0.09%	1,281	6.0%	0.02%
Jan-11	1,017	4.9%	0.09%	1,295	7.7%	0.02%
Feb-11	1,022	4.7%	0.09%	1,300	7.3%	0.02%
Mar-11	1,028	5.3%	0.09%	1,306	7.4%	0.02%
Apr-11	1,034	5.6%	0.09%	1,312	8.4%	0.02%
May-11	1,039	5.5%	0.09%	1,325	9.3%	0.02%
Jun-11	1,048	6.2%	0.08%	1,332	9.0%	0.02%
Jul-11	1,069	8.3%	0.08%	1,361	11.3%	0.02%
Aug-11	1,091	10.2%	0.08%	1,411	14.5%	0.02%
Sep-11	1,094	10.0%	0.08%	1,420	14.3%	0.01%
Oct-11	1,100	9.8%	0.07%	1,428	14.2%	0.01%
Nov-11	1,105	10.0%	0.07%	1,436	12.9%	0.01%
Dec-11	1,110	10.0%	0.07%	1,443	12.6%	0.01%
Jan-12	1,126	10.7%	0.06%	1,470	13.5%	0.01%
Feb-12	1,129	10.5%	0.07%	1,467	12.9%	0.01%
Mar-12	1,133	10.3%	0.07%	1,470	12.6%	0.01%
Apr-12	1,138	10.1%	0.07%	1,464	11.5%	0.01%
May-12	1,142	9.9%	0.07%	1,454	9.7%	0.01%
Jun-12	1,147	9.4%	0.07%	1,461	9.7%	0.01%
Jul-12	1,156	8.2%	0.06%	1,532	12.6%	0.01%
Aug-12	1,161	6.3%	0.06%	1,542	9.2%	0.01%
Sep-12	1,171	7.0%	0.06%	1,580	11.3%	0.01%
Oct-12	1,182	7.5%	0.06%	1,606	12.5%	0.01%



CENTER FOR FINANCIAL STABILITY

Dialog • Insight • Solutions

Figure 6 - Components of CFS Divisia M4 - Highlights for October 2012

Components in this table build from the narrowest aggregate at the top to the broadest at the bottom. For example, the darkest green in the left column includes components of DM1. The next tier shows the components included in DM2, but not within DM1.

	Weighted Contribution To DM4 Money Annual Growth Rate*	Divisia Growth-Rate Weights (Average of Last 12 Months)	Unweighted Year-Over-Year Percentage Growth Rate
DM1			
Currency	0.6%	6.3%	9.3%
Traveler's Checks	0.0%	0.0%	-11.4%
Demand Deposits **	1.5%	8.1%	19.4%
OCDs at Commercial Banks **	0.1%	2.4%	2.4%
OCDs at Thrift Institutions **	0.1%	1.8%	7.8%
Added into DM2			
Savings Deposits at Commercial Banks **	2.7%	26.8%	10.7%
Savings Deposits at Thrift Institutions **	0.2%	4.8%	4.9%
Retail Money-Market Funds	-0.3%	3.9%	-6.7%
Small Time Deposits at Commercial Banks	-0.5%	2.9%	-14.7%
Small Time Deposits at Thrifts	-0.2%	1.1%	-20.0%
Added into DM3			
Institutional Money-Market Funds	-0.1%	10.6%	-1.3%
Large Time Deposits	-0.2%	6.7%	-3.1%
Repurchase Agreements	-0.1%	9.9%	-0.7%
Added into DM4-			
Commercial Paper	-0.3%	5.3%	-5.0%
Added into DM4			
T-Bills	0.9%	9.4%	9.5%

Note: The row labels in the first column are shaded to show which components are included into which aggregates. Each data column is shaded on a gradient from dark green (maximum) to dark red (minimum). See the figures 10-15 for these calculations over time and a chart version of the above table.

* Average of last 12 monthly weighted contributions to CFS Divisia M4 growth rates (annual rates). Unlike the other percent calculations in this report, the weighted contributions use continuous percent changes computed from natural logs.

** Sweeps adjusted.

Components That Are Pulling CFS Divisia M4 Up

The largest positive contributor to CFS Divisia M4 growth was commercial banks' savings deposits (sweeps adjusted), contributing an increase of 2.7% in the last 12 months ending October 2012. Their growth-rate weight was 26.8%. Unweighted, they increased 10.7% in the last 12 months. This component is included in all of the aggregates, except the narrowest (DM1).

The second largest positive contributor to growth was demand deposits (sweeps adjusted), contributing an increase of 1.5% in the last 12 months ending October 2012. Their growth-rate weight was 8.1%. Unweighted, they increased 19.4% in the last 12 months. This component is included in all of the aggregates.

The third largest positive contributor to growth was T-bills, contributing an increase of 0.9% in the last 12 months ending October 2012. Their growth-rate weight was 9.4%. Unweighted, they increased 9.5% in the last 12 months. This component is included only in the broadest aggregate (DM4).

Components That Are Pulling CFS Divisia M4 Down

The largest negative contributor to CFS Divisia M4 growth was commercial banks' small time deposits, contributing a decrease of 0.5% in the last 12 months ending October 2012. Their growth-rate weight was 2.9%. Unweighted, they decreased 14.7% in the last 12 months. This component is included in all of the aggregates, except the narrowest (DM1).

The second largest negative contributor to CFS Divisia M4 growth was commercial paper, contributing a decrease of 0.3% in the last 12 months ending October 2012. Its growth-rate weight was 5.3%. Unweighted, it decreased 5.0% in the last 12 months. This component is included in DM4 and DM4-, but not in the narrower aggregates.

The third largest negative contributor to CFS Divisia M4 growth was retail money-market funds, contributing a decrease of 0.3% in the last 12 months ending October 2012. Their growth-rate weight was 3.9%. Unweighted, they decreased 6.7% in the last 12 months. This component is included in all of the aggregates, except the narrowest (DM1).



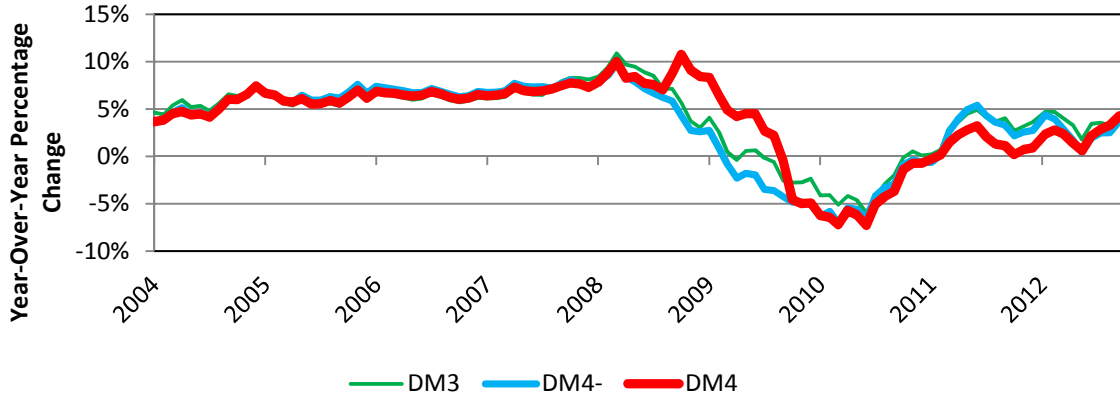
CENTER FOR FINANCIAL STABILITY

Dialog • Insight • Solutions

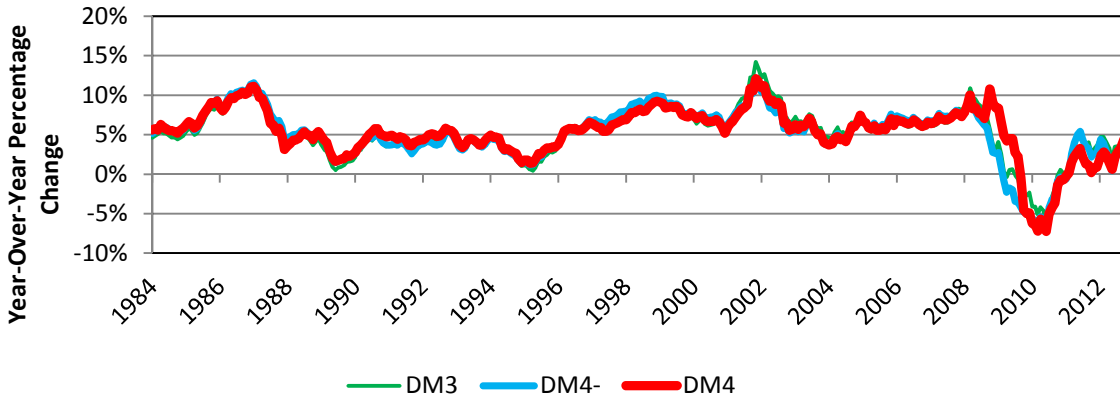
Figure 7 - CFS Divisia Monetary Growth Charts

DM3, DM4-, and DM4 Year-Over-Year Percent Change, Three Date Horizons

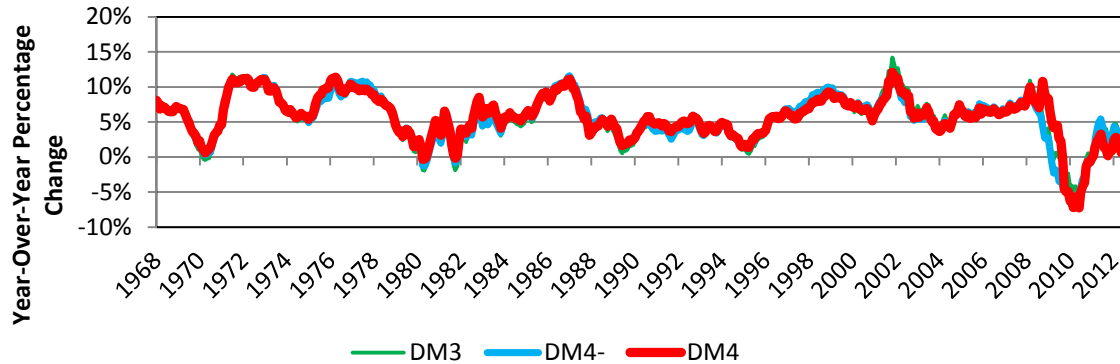
2004 to Present



1984-Present



1968 to Present





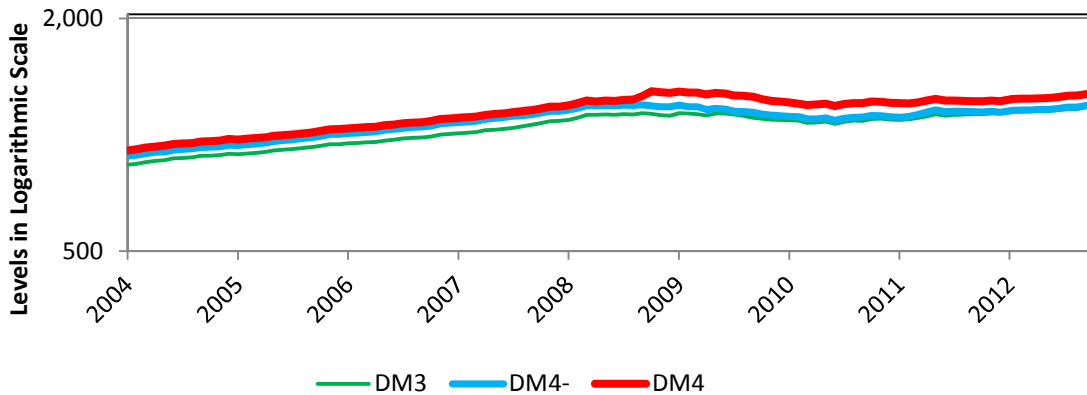
CENTER FOR FINANCIAL STABILITY

Dialog • Insight • Solutions

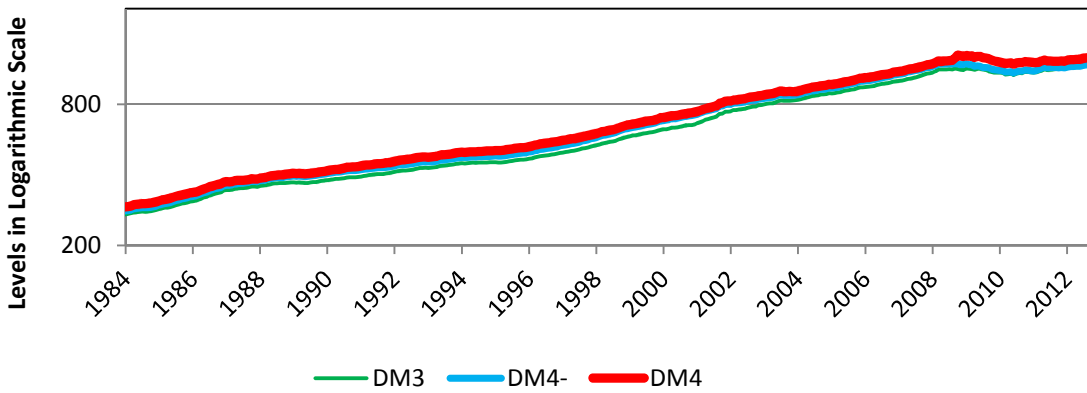
Figure 8 - CFS Divisia Monetary Aggregates Level Charts

DM3, DM4-, and DM4 Levels, Normalized to Equal 100 in Jan. 1967, Logarithmic Scales

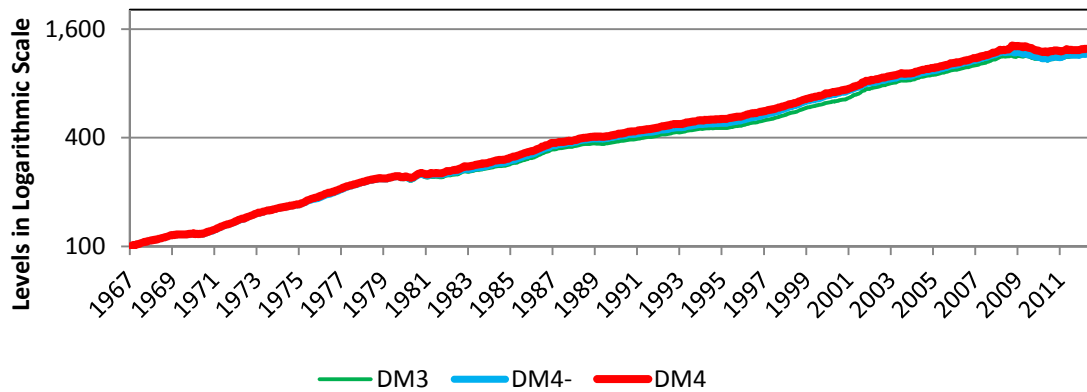
2004 to Present



1984 to Present



1967 to Present





CENTER FOR FINANCIAL STABILITY

Dialog • Insight • Solutions

Figure 9 - Components of All CFS Divisia Aggregates
Growth-Rate Weights Used in Latest Month (October 2012)

	Divisia M1	Divisia M2M	Divisia M2M	Divisia M2	Divisia ALL	Divisia M3	Divisia M4-	Divisia M4
Currency	32.9%	11.6%	9.8%	10.9%	9.3%	7.5%	7.1%	6.4%
Traveler's Checks	0.1%	0.0%	0.0%	0.0%	0.0%	0.0%	0.0%	0.0%
Demand Deposits (Sweeps Adjusted)	45.3%	16.0%	13.5%	15.0%	12.8%	10.3%	9.7%	8.8%
OCDs at Commercial Banks (Sweeps Adjusted)	12.3%	4.4%	3.7%	4.1%	3.5%	2.8%	2.6%	2.4%
OCDs at Thrift Institutions (Sweeps Adjusted)	9.4%	3.3%	2.8%	3.1%	2.6%	2.1%	2.0%	1.8%
Savings Deposits at Commercial Banks (Sweeps Adjusted)		49.2%	41.5%	46.1%	39.3%	31.7%	29.9%	27.1%
Savings Deposits at Thrift Institutions (Sweeps Adjusted)		8.9%	7.5%	8.3%	7.1%	5.7%	5.4%	4.9%
Retail Money-Market Funds		6.6%	5.6%	6.2%	5.3%	4.3%	4.0%	3.7%
Small Time Deposits at Commercial Banks				4.6%	3.9%	3.1%	3.0%	2.7%
Small Time Deposits at Thrifts				1.6%	1.4%	1.1%	1.1%	1.0%
Institutional Money-Market Funds			15.7%		14.9%	12.0%	11.3%	10.3%
Large Time Deposits						8.5%	8.0%	7.2%
Repurchase Agreements						10.8%	10.1%	9.2%
Commercial Paper							5.8%	5.3%
T-Bills								9.3%
Sum of Weights	100.0%	100.0%	100.0%	100.0%	100.0%	100.0%	100.0%	100.0%

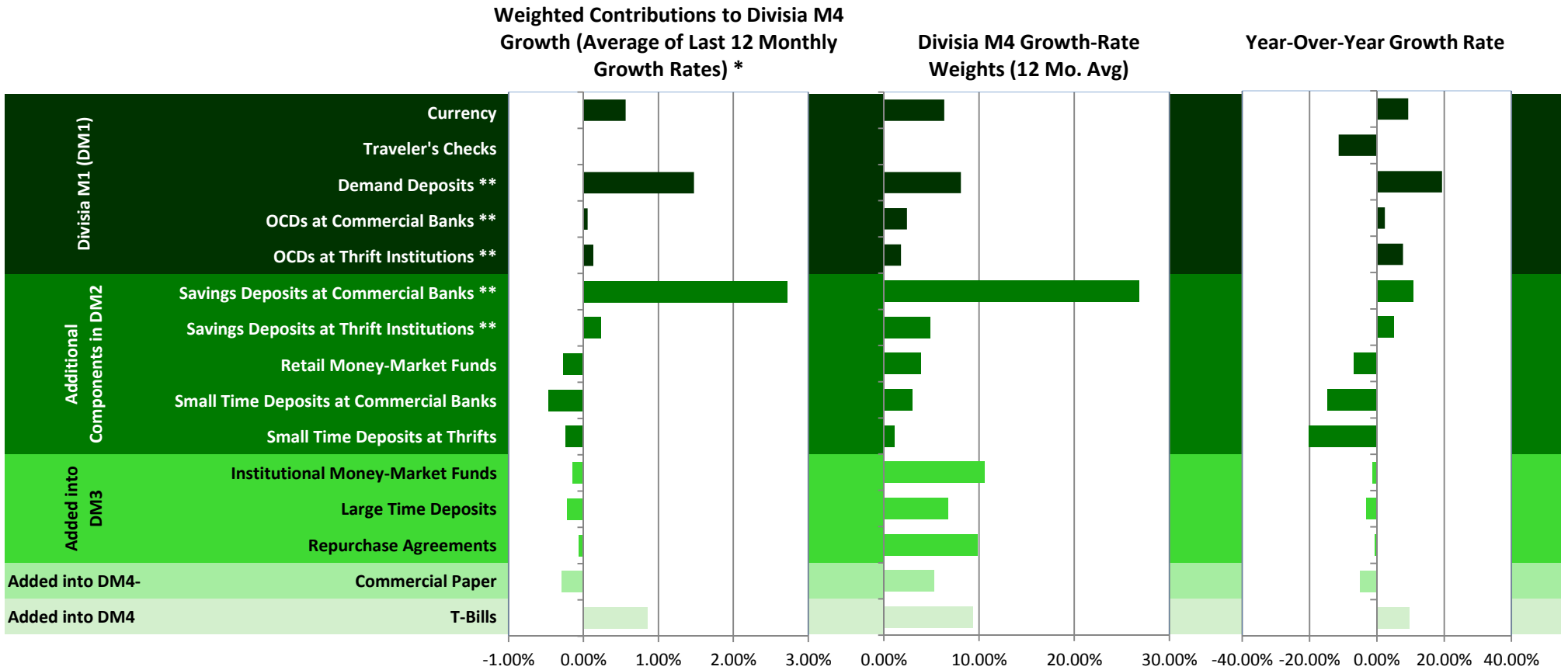
* Sweeps adjusted.



CENTER FOR FINANCIAL STABILITY

Figure 10 - Components of CFS Divisia M4 - Highlights for October 2012

Note: Each component's influence on DM4 growth (left chart column) reflects the component's unweighted growth (right chart column) and its growth-rate weight (middle chart column). The background and the bar colors are shaded to show which components are included in which aggregates. The lighter the green, the broader the aggregate.



* Average of last 12 monthly weighted contributions to CFS Divisia M4 growth rates (annual rates). Unlike the other percent calculations in this report, the weighted contributions use continuous percent changes computed from natural logs e.g. $(\ln(x)-\ln(x-1))$.

** Sweeps adjusted.



CENTER FOR FINANCIAL STABILITY

Dialog • Insight • Solutions

Figure 16 - CFS Divisia M4 Quarterly Growth Triangle

Recent Quarterly History (Compound Annual Rates of Change)

This triangular report design was originated by Federal Reserve Bank of St. Louis to show seasonally adjusted annualized growth rates for a variety of time periods.

Terminal Period	Initial Period																			
	Q4 2007	Q1 2008	Q2 2008	Q3 2008	Q4 2008	Q1 2009	Q2 2009	Q3 2009	Q4 2009	Q1 2010	Q2 2010	Q3 2010	Q4 2010	Q1 2011	Q2 2011	Q3 2011	Q4 2011	Q1 2012		Q2 2012
Q1 2008	11.1																			1,209.07
Q2 2008	7.9	4.8																		1,223.24
Q3 2008	7.3	5.4	6.0																	1,241.21
Q4 2008	9.4	8.9	11.0	16.2																1,288.65
Q1 2009	7.4	6.5	7.1	7.7	-0.1															1,288.23
Q2 2009	5.6	4.5	4.4	3.9	-1.8	-3.4														1,277.22
Q3 2009	3.9	2.8	2.4	1.5	-3.0	-4.4	-5.4													1,259.54
Q4 2009	2.1	0.8	0.2	-0.9	-4.8	-6.3	-7.8	-10.0												1,226.64
Q1 2010	0.9	-0.3	-1.0	-2.1	-5.4	-6.6	-7.7	-8.8	-7.5											1,202.89
Q2 2010	0.6	-0.5	-1.1	-2.1	-4.9	-5.8	-6.4	-6.7	-5.0	-2.3										1,195.88
Q3 2010	0.8	-0.1	-0.7	-1.5	-3.8	-4.3	-4.5	-4.3	-2.3	0.4	3.1									1,205.18
Q4 2010	1.0	0.2	-0.3	-0.9	-2.9	-3.3	-3.3	-2.8	-0.9	1.4	3.2	3.3								1,215.12
Q1 2011	0.8	0.0	-0.4	-1.1	-2.8	-3.2	-3.1	-2.7	-1.2	0.5	1.4	0.5	-2.2							1,208.34
Q2 2011	1.2	0.5	0.2	-0.4	-1.9	-2.1	-1.9	-1.4	0.1	1.7	2.8	2.7	2.3	7.1						1,229.14
Q3 2011	1.0	0.3	0.0	-0.5	-1.9	-2.0	-1.9	-1.4	-0.2	1.1	1.8	1.5	0.9	2.5	-1.9					1,223.37
Q4 2011	0.9	0.3	0.0	-0.5	-1.7	-1.9	-1.7	-1.3	-0.2	0.9	1.5	1.2	0.6	1.6	-1.1	-0.2				1,222.67
Q1 2012	1.2	0.6	0.3	-0.1	-1.2	-1.3	-1.1	-0.7	0.4	1.5	2.0	1.9	1.6	2.5	1.0	2.5	5.4			1,238.81
Q2 2012	1.3	0.7	0.5	0.1	-0.9	-1.0	-0.8	-0.4	0.6	1.6	2.1	1.9	1.7	2.5	1.4	2.5	3.9	2.5		1,246.49
Q3 2012	1.5	1.0	0.8	0.5	-0.5	-0.5	-0.3	0.2	1.2	2.1	2.6	2.5	2.4	3.2	2.4	3.5	4.8	4.4	6.4	1,265.99

How to Read this Table:

To find a growth rate for a particular date range, find the column that contains the start quarter; then find the row that contains the end quarter of the date range. The cell where they intersect represents the annualized growth rate for that time period. For example, the last row contains the growth rates ending in the most recent quarter for each starting quarter going back 4 3/4 years. The outer diagonal shows the growth rates that are the quarter-over-quarter rates for the last few years. Red and green shades highlight the largest negative and positive growth rates.

Quarterly Data Highlights:

- In the last quarter, CFS Divisia M4 grew by 6.4% (seasonally adjusted annual rate).
- In the last year, CFS Divisia M4 grew by 3.5% (seasonally adjusted annual rate).
- In the last 2 years, CFS Divisia M4 grew by 2.5% (seasonally adjusted annual rate).
- In the last 3 years, CFS Divisia M4 grew by 0.2% (seasonally adjusted annual rate).
- In the last 4 years, CFS Divisia M4 grew by 0.5% (seasonally adjusted annual rate).



CENTER FOR FINANCIAL STABILITY

Dialog • Insight • Solutions

Figure 11 - Components of CFS Divisia M4 (Asset Levels in Billions of Dollars)

	Divisia M1 (DM1)					Additional Components in DM2					Additional Components in DM3			Added into DM4-	Added into DM4
	Currency	Traveler's Checks	Demand Deposits *	OCDs at Commercial Banks *	OCDs at Thrift Institutions *	Savings Deposits at Commercial Banks *	Savings Deposits at Thrift Institutions *	Retail Money-Market Funds	Small Time Deposits at Commercial Banks	Small Time Deposits at Thrifts	Institutional Money-Market Funds	Large Time Deposits	Repurchase Agreements	Commercial Paper	T-Bills
Sep-10	899	5	917	443	300	3,630	760	692	713	283	1,940	1,756	1,743	1,103	1,794
Oct-10	907	5	920	442	305	3,690	768	684	694	279	1,927	1,750	1,882	1,078	1,805
Nov-10	914	5	957	448	301	3,702	772	678	674	275	1,923	1,741	1,863	1,055	1,780
Dec-10	918	5	974	444	303	3,745	777	673	657	271	1,896	1,717	1,797	1,037	1,795
Jan-11	923	5	999	439	306	3,784	793	672	644	266	1,849	1,713	1,769	978	1,828
Feb-11	930	5	999	440	308	3,824	806	665	635	263	1,825	1,718	1,786	1,031	1,700
Mar-11	939	5	1,003	439	309	3,861	819	663	624	260	1,847	1,732	1,813	1,076	1,634
Apr-11	948	5	1,019	426	310	3,910	821	659	615	257	1,874	1,754	1,844	1,168	1,611
May-11	956	5	1,035	430	307	3,935	833	657	604	254	1,894	1,787	1,955	1,175	1,560
Jun-11	963	5	1,046	429	303	4,011	834	659	593	251	1,869	1,747	1,784	1,171	1,548
Jul-11	969	5	1,114	420	298	4,133	841	658	581	247	1,836	1,668	1,787	1,138	1,518
Aug-11	976	4	1,221	411	296	4,220	845	671	569	243	1,747	1,554	1,812	1,091	1,481
Sep-11	982	4	1,241	405	294	4,244	846	665	559	239	1,772	1,550	1,795	1,029	1,496
Oct-11	986	4	1,254	401	296	4,278	853	669	550	235	1,767	1,521	1,766	1,019	1,513
Nov-11	993	4	1,265	399	296	4,318	860	664	542	232	1,757	1,493	1,815	993	1,518
Dec-11	1,000	4	1,275	397	295	4,354	864	662	537	229	1,765	1,487	1,757	938	1,533
Jan-12	1,010	4	1,317	398	298	4,434	871	659	534	223	1,763	1,481	1,767	976	1,567
Feb-12	1,020	4	1,287	403	307	4,506	857	646	533	213	1,747	1,479	1,794	964	1,570
Mar-12	1,029	4	1,284	404	309	4,543	866	640	525	208	1,752	1,474	1,775	937	1,597
Apr-12	1,035	4	1,281	394	301	4,604	878	638	515	206	1,738	1,473	1,777	951	1,586
May-12	1,039	4	1,255	394	304	4,656	893	635	506	203	1,734	1,461	1,759	971	1,594
Jun-12	1,045	4	1,274	384	303	4,697	895	630	498	201	1,723	1,480	1,790	966	1,616
Jul-12	1,051	4	1,381	406	314	4,646	889	626	491	197	1,728	1,500	1,783	1,000	1,618
Aug-12	1,058	4	1,393	405	316	4,675	891	623	484	194	1,743	1,500	1,723	997	1,652
Sep-12	1,069	4	1,464	401	318	4,694	888	622	477	191	1,755	1,493	1,805	976	1,648
Oct-12	1,078	4	1,497	410	319	4,738	894	624	469	188	1,743	1,475	1,754	968	1,657

Note: Four components are not included, because they ended in Aug. '91 (MMDAs at commercial banks, MMDAs at thrifts, savings deposits at commercial banks excluding MMDAs, savings deposits at thrifts excluding MMDAs).

*Sweeps adjusted.



CENTER FOR FINANCIAL STABILITY

Dialog • Insight • Solutions

Figure 12 - Components of CFS Divisia M4 (Year-Over-Year Growth Rates)

	Divisia M1 (DM1)					Additional Components in DM2					Additional Components in DM3			Added into DM4-	Added into DM4
	Currency	Traveler's Checks	Demand Deposits *	OCDs at Commercial Banks *	OCDs at Thrift Institutions *	Savings Deposits at Commercial Banks *	Savings Deposits at Thrift Institutions *	Retail Money-Market Funds	Small Time Deposits at Commercial Banks	Small Time Deposits at Thrifts	Institutional Money-Market Funds	Large Time Deposits	Repurchase Agreements	Commercial Paper	T-Bills
Sep-10	4.4%	-7.8%	6.7%	0.2%	4.1%	16.1%	9.4%	-18.7%	-23.8%	-15.0%	-20.8%	-5.9%	6.3%	-13.8%	-9.5%
Oct-10	5.2%	-7.8%	7.3%	-1.8%	3.1%	15.6%	8.8%	-16.7%	-23.4%	-15.1%	-18.9%	-6.1%	17.1%	-10.0%	-5.1%
Nov-10	6.1%	-7.8%	10.8%	-2.1%	4.1%	12.9%	11.3%	-15.3%	-23.9%	-14.9%	-17.0%	-6.7%	20.9%	-11.8%	-3.2%
Dec-10	6.3%	-7.8%	11.0%	-2.5%	3.0%	12.8%	11.5%	-13.5%	-23.9%	-15.3%	-16.0%	-8.7%	14.9%	-9.8%	-1.7%
Jan-11	6.8%	-7.8%	15.0%	-0.8%	1.5%	13.4%	12.5%	-11.5%	-23.2%	-15.8%	-16.6%	-8.5%	9.2%	-12.0%	3.0%
Feb-11	7.2%	-8.0%	14.0%	-2.6%	2.6%	13.0%	11.9%	-11.2%	-22.8%	-15.6%	-15.2%	-7.7%	10.6%	-7.1%	0.2%
Mar-11	7.7%	-8.0%	14.8%	-4.8%	3.7%	13.4%	12.1%	-9.1%	-22.5%	-15.3%	-11.1%	-5.2%	18.2%	-1.5%	-8.2%
Apr-11	8.2%	-6.1%	15.0%	-0.5%	1.9%	12.6%	11.8%	-8.1%	-22.2%	-14.9%	-5.8%	-1.6%	11.0%	8.3%	-11.6%
May-11	8.7%	-6.1%	17.5%	-0.3%	-0.3%	11.7%	11.8%	-8.2%	-22.0%	-14.6%	-2.4%	3.4%	8.6%	11.2%	-14.6%
Jun-11	9.1%	-6.3%	17.1%	-2.1%	0.3%	13.3%	11.1%	-8.1%	-22.0%	-14.5%	-2.3%	0.9%	11.6%	12.4%	-14.4%
Jul-11	9.3%	-6.3%	24.8%	-4.0%	-1.5%	16.2%	11.8%	-7.3%	-22.1%	-14.7%	-4.4%	-5.1%	1.9%	6.8%	-16.1%
Aug-11	9.3%	-6.4%	34.6%	-6.0%	-2.2%	17.6%	11.6%	-4.0%	-22.2%	-15.3%	-9.6%	-11.8%	0.5%	2.5%	-17.7%
Sep-11	9.2%	-6.4%	35.4%	-8.6%	-2.3%	16.9%	11.3%	-3.8%	-21.7%	-15.4%	-8.6%	-11.7%	3.0%	-6.8%	-16.6%
Oct-11	8.7%	-6.4%	36.2%	-9.4%	-3.0%	15.9%	11.0%	-2.3%	-20.7%	-15.7%	-8.3%	-13.0%	-6.2%	-5.4%	-16.2%
Nov-11	8.7%	-8.5%	32.2%	-11.0%	-1.6%	16.7%	11.5%	-2.2%	-19.6%	-15.7%	-8.6%	-14.2%	-2.6%	-5.8%	-14.7%
Dec-11	9.0%	-8.5%	30.9%	-10.4%	-2.3%	16.2%	11.2%	-1.7%	-18.2%	-15.5%	-6.9%	-13.4%	-2.2%	-9.6%	-14.6%
Jan-12	9.4%	-10.6%	31.9%	-9.3%	-2.4%	17.2%	9.8%	-1.9%	-17.0%	-16.3%	-4.7%	-13.6%	-0.1%	-0.2%	-14.3%
Feb-12	9.6%	-8.7%	28.9%	-8.3%	-0.2%	17.8%	6.4%	-2.8%	-16.0%	-18.9%	-4.3%	-13.9%	0.5%	-6.5%	-7.6%
Mar-12	9.6%	-10.9%	28.0%	-7.9%	-0.2%	17.7%	5.7%	-3.4%	-15.8%	-20.1%	-5.1%	-14.9%	-2.0%	-12.9%	-2.2%
Apr-12	9.2%	-10.9%	25.7%	-7.6%	-2.8%	17.8%	7.0%	-3.1%	-16.2%	-20.1%	-7.3%	-16.0%	-3.6%	-18.6%	-1.5%
May-12	8.7%	-13.0%	21.3%	-8.4%	-1.0%	18.3%	7.2%	-3.5%	-16.2%	-20.2%	-8.5%	-18.2%	-10.0%	-17.4%	2.2%
Jun-12	8.5%	-11.1%	21.7%	-10.6%	0.0%	17.1%	7.3%	-4.4%	-15.9%	-20.0%	-7.8%	-15.3%	0.4%	-17.5%	4.4%
Jul-12	8.5%	-13.3%	24.0%	-3.3%	5.3%	12.4%	5.7%	-5.0%	-15.5%	-20.3%	-5.9%	-10.1%	-0.2%	-12.1%	6.6%
Aug-12	8.4%	-11.4%	14.0%	-1.3%	6.7%	10.8%	5.4%	-7.2%	-15.1%	-20.0%	-0.3%	-3.5%	-4.9%	-8.7%	11.5%
Sep-12	8.8%	-11.4%	17.9%	-1.0%	8.4%	10.6%	5.0%	-6.5%	-14.7%	-20.0%	-1.0%	-3.7%	0.5%	-5.1%	10.1%
Oct-12	9.3%	-11.4%	19.4%	2.4%	7.8%	10.7%	4.9%	-6.7%	-14.7%	-20.0%	-1.3%	-3.1%	-0.7%	-5.0%	9.5%

Note: Four components are not included, because they ended in Aug. '91 (MMDAs at commercial banks, MMDAs at thrifts, savings deposits at commercial banks excluding MMDAs, savings deposits at thrifts excluding MMDAs).

*Sweeps adjusted.



CENTER FOR FINANCIAL STABILITY

Dialog • Insight • Solutions

Figure 13 - CFS Divisia M4 Growth-Rate Weights (Based on Average of Contemporaneous and Previous Months)

	Divisia M1 (DM1)					Additional Components in DM2					Additional Components in DM3			Added into DM4-	Added into DM4
	Currency	Traveler's Checks	Demand Deposits *	OCDs at Commercial Banks *	OCDs at Thrift Institutions *	Savings Deposits at Commercial Banks *	Savings Deposits at Thrift Institutions *	Retail Money-Market Funds	Small Time Deposits at Commercial Banks	Small Time Deposits at Thrifts	Institutional Money-Market Funds	Large Time Deposits	Repurchase Agreements	Commercial Paper	T-Bills
Sep-10	5.7%	0.0%	5.8%	2.7%	1.8%	22.0%	4.2%	4.4%	4.1%	1.4%	12.0%	9.1%	10.1%	6.1%	10.6%
Oct-10	5.7%	0.0%	5.8%	2.7%	1.8%	22.1%	4.2%	4.3%	4.0%	1.4%	11.8%	9.3%	10.2%	6.1%	10.6%
Nov-10	5.6%	0.0%	5.8%	2.7%	1.8%	22.2%	4.2%	4.2%	3.9%	1.4%	11.7%	9.3%	10.6%	6.0%	10.5%
Dec-10	5.7%	0.0%	6.0%	2.7%	1.8%	22.5%	4.3%	4.1%	3.9%	1.4%	11.7%	9.2%	10.4%	5.8%	10.5%
Jan-11	5.8%	0.0%	6.2%	2.7%	1.8%	22.9%	4.3%	4.2%	3.8%	1.4%	11.6%	8.9%	10.3%	5.6%	10.6%
Feb-11	5.9%	0.0%	6.3%	2.7%	1.8%	23.2%	4.3%	4.2%	3.7%	1.3%	11.5%	8.8%	10.3%	5.6%	10.4%
Mar-11	5.9%	0.0%	6.3%	2.7%	1.8%	23.3%	4.4%	4.1%	3.6%	1.3%	11.4%	8.9%	10.5%	5.9%	9.9%
Apr-11	5.9%	0.0%	6.3%	2.6%	1.8%	23.2%	4.4%	4.1%	3.5%	1.3%	11.4%	9.0%	10.8%	6.2%	9.7%
May-11	5.8%	0.0%	6.3%	2.6%	1.8%	23.0%	4.4%	4.0%	3.4%	1.3%	11.4%	9.1%	11.2%	6.4%	9.4%
Jun-11	5.8%	0.0%	6.3%	2.6%	1.8%	23.3%	4.4%	4.0%	3.3%	1.2%	11.3%	9.1%	11.0%	6.5%	9.3%
Jul-11	5.9%	0.0%	6.6%	2.5%	1.7%	24.0%	4.5%	4.0%	3.3%	1.2%	11.2%	8.7%	10.6%	6.5%	9.2%
Aug-11	6.0%	0.0%	7.1%	2.5%	1.7%	24.7%	4.5%	4.0%	3.3%	1.2%	10.9%	8.0%	10.7%	6.2%	9.0%
Sep-11	6.0%	0.0%	7.6%	2.5%	1.7%	25.2%	4.6%	4.1%	3.2%	1.2%	10.7%	7.5%	10.6%	5.8%	9.1%
Oct-11	6.1%	0.0%	7.7%	2.5%	1.7%	25.4%	4.7%	4.1%	3.2%	1.2%	10.8%	7.2%	10.5%	5.6%	9.2%
Nov-11	6.1%	0.0%	7.8%	2.4%	1.7%	25.7%	4.7%	4.1%	3.2%	1.2%	10.8%	6.8%	10.5%	5.5%	9.3%
Dec-11	6.2%	0.0%	7.9%	2.4%	1.8%	26.0%	4.8%	4.1%	3.1%	1.2%	10.8%	6.3%	10.5%	5.4%	9.4%
Jan-12	6.2%	0.0%	8.0%	2.4%	1.7%	26.3%	4.8%	4.0%	3.1%	1.2%	10.8%	6.3%	10.3%	5.3%	9.5%
Feb-12	6.2%	0.0%	8.0%	2.4%	1.8%	26.5%	4.8%	4.0%	3.1%	1.1%	10.6%	6.6%	10.2%	5.3%	9.3%
Mar-12	6.3%	0.0%	7.9%	2.4%	1.8%	26.7%	4.8%	3.9%	3.1%	1.1%	10.6%	6.8%	10.1%	5.2%	9.3%
Apr-12	6.4%	0.0%	7.9%	2.4%	1.8%	27.0%	4.8%	3.9%	3.0%	1.1%	10.6%	6.7%	9.8%	5.2%	9.4%
May-12	6.5%	0.0%	7.9%	2.4%	1.8%	27.4%	4.9%	3.9%	2.9%	1.0%	10.6%	6.5%	9.7%	5.2%	9.4%
Jun-12	6.5%	0.0%	7.9%	2.4%	1.8%	27.6%	4.9%	3.9%	2.9%	1.0%	10.5%	6.4%	9.6%	5.2%	9.4%
Jul-12	6.4%	0.0%	8.1%	2.4%	1.8%	27.4%	4.9%	3.8%	2.8%	1.0%	10.4%	6.7%	9.6%	5.3%	9.4%
Aug-12	6.4%	0.0%	8.4%	2.4%	1.8%	27.1%	4.9%	3.7%	2.8%	1.0%	10.3%	7.1%	9.5%	5.4%	9.3%
Sep-12	6.4%	0.0%	8.5%	2.4%	1.8%	27.0%	4.9%	3.7%	2.7%	1.0%	10.3%	7.2%	9.3%	5.4%	9.3%
Oct-12	6.4%	0.0%	8.8%	2.4%	1.8%	27.1%	4.9%	3.7%	2.7%	1.0%	10.3%	7.2%	9.2%	5.3%	9.3%
12 Mo Chg.	0.3%	0.0%	1.1%	-0.1%	0.1%	1.7%	0.2%	-0.4%	-0.5%	-0.3%	-0.6%	0.0%	-1.3%	-0.3%	0.1%

Note: The growth-rate Divisia weights are the arithmetic average of the component's contemporaneous expenditure share and the asset's expenditure share for the prior month. The expenditure shares are each component's share in the sum of the products of each component's quantity and user-cost price.

*Sweeps adjusted.



CENTER FOR FINANCIAL STABILITY

Dialog • Insight • Solutions

Figure 14 - Weighted Contributions to Divisia M4 Growth (12-Month Moving Average of Monthly Contributions at Annual Rates)

	Divisia M1 (DM1)					Additional Components in DM2					Additional Components in DM3			Added into DM4-	Added into DM4
	Currency	Traveler's Checks	Demand Deposits *	OCDs at Commercial Banks *	OCDs at Thrift Institutions *	Savings Deposits at Commercial Banks *	Savings Deposits at Thrift Institutions *	Retail Money Market Funds	Small Time Deposits at Commercial Banks	Small Time Deposits at Thrifts	Institutional Money-Market Funds	Large Time Deposits	Repurchase Agreements	Commercial Paper	T-Bills
Sep-10	0.2%	0.0%	0.4%	0.0%	0.1%	3.0%	0.3%	-1.0%	-1.2%	-0.2%	-3.2%	-0.6%	0.6%	-1.0%	-1.1%
Oct-10	0.3%	0.0%	0.4%	-0.1%	0.1%	3.0%	0.3%	-0.9%	-1.2%	-0.2%	-2.8%	-0.6%	1.6%	-0.7%	-0.6%
Nov-10	0.3%	0.0%	0.6%	-0.1%	0.1%	2.6%	0.4%	-0.8%	-1.2%	-0.2%	-2.5%	-0.7%	1.9%	-0.8%	-0.4%
Dec-10	0.3%	0.0%	0.6%	-0.1%	0.0%	2.6%	0.4%	-0.7%	-1.2%	-0.2%	-2.3%	-0.9%	1.4%	-0.6%	-0.2%
Jan-11	0.4%	0.0%	0.8%	0.0%	0.0%	2.7%	0.5%	-0.6%	-1.1%	-0.2%	-2.3%	-0.8%	0.9%	-0.7%	0.3%
Feb-11	0.4%	0.0%	0.8%	-0.1%	0.0%	2.7%	0.5%	-0.5%	-1.1%	-0.2%	-2.1%	-0.8%	1.0%	-0.4%	0.0%
Mar-11	0.4%	0.0%	0.8%	-0.1%	0.1%	2.8%	0.5%	-0.4%	-1.0%	-0.2%	-1.5%	-0.5%	1.6%	-0.1%	-0.9%
Apr-11	0.5%	0.0%	0.8%	0.0%	0.0%	2.7%	0.5%	-0.4%	-1.0%	-0.2%	-0.7%	-0.2%	1.1%	0.5%	-1.3%
May-11	0.5%	0.0%	1.0%	0.0%	0.0%	2.5%	0.5%	-0.4%	-1.0%	-0.2%	-0.3%	0.3%	0.9%	0.7%	-1.6%
Jun-11	0.5%	0.0%	1.0%	-0.1%	0.0%	2.8%	0.5%	-0.4%	-1.0%	-0.2%	-0.3%	0.1%	1.1%	0.7%	-1.5%
Jul-11	0.5%	0.0%	1.4%	-0.1%	0.0%	3.5%	0.5%	-0.3%	-0.9%	-0.2%	-0.5%	-0.5%	0.2%	0.4%	-1.7%
Aug-11	0.5%	0.0%	1.9%	-0.2%	0.0%	3.8%	0.5%	-0.2%	-0.9%	-0.2%	-1.1%	-1.1%	0.0%	0.1%	-1.9%
Sep-11	0.5%	0.0%	2.0%	-0.2%	0.0%	3.7%	0.5%	-0.2%	-0.9%	-0.2%	-1.0%	-1.0%	0.3%	-0.4%	-1.8%
Oct-11	0.5%	0.0%	2.1%	-0.3%	-0.1%	3.5%	0.5%	-0.1%	-0.8%	-0.2%	-1.0%	-1.1%	-0.7%	-0.3%	-1.7%
Nov-11	0.5%	0.0%	1.9%	-0.3%	0.0%	3.7%	0.5%	-0.1%	-0.8%	-0.2%	-1.0%	-1.2%	-0.3%	-0.3%	-1.5%
Dec-11	0.5%	0.0%	1.9%	-0.3%	0.0%	3.6%	0.5%	-0.1%	-0.7%	-0.2%	-0.8%	-1.1%	-0.2%	-0.6%	-1.5%
Jan-12	0.5%	0.0%	2.0%	-0.2%	0.0%	3.9%	0.4%	-0.1%	-0.6%	-0.2%	-0.5%	-1.1%	0.0%	0.0%	-1.5%
Feb-12	0.6%	0.0%	1.8%	-0.2%	0.0%	4.0%	0.3%	-0.1%	-0.6%	-0.3%	-0.5%	-1.2%	0.0%	-0.4%	-0.8%
Mar-12	0.6%	0.0%	1.7%	-0.2%	0.0%	4.0%	0.3%	-0.1%	-0.6%	-0.3%	-0.6%	-1.3%	-0.2%	-0.8%	-0.2%
Apr-12	0.5%	0.0%	1.6%	-0.2%	0.0%	4.1%	0.3%	-0.1%	-0.6%	-0.3%	-0.8%	-1.4%	-0.4%	-1.2%	-0.1%
May-12	0.5%	0.0%	1.3%	-0.2%	0.0%	4.3%	0.3%	-0.1%	-0.6%	-0.3%	-1.0%	-1.6%	-1.1%	-1.1%	0.2%
Jun-12	0.5%	0.0%	1.4%	-0.3%	0.0%	4.1%	0.3%	-0.2%	-0.5%	-0.3%	-0.9%	-1.3%	0.0%	-1.1%	0.4%
Jul-12	0.5%	0.0%	1.6%	-0.1%	0.1%	3.0%	0.3%	-0.2%	-0.5%	-0.3%	-0.7%	-0.8%	0.0%	-0.8%	0.6%
Aug-12	0.5%	0.0%	1.1%	0.0%	0.1%	2.7%	0.3%	-0.3%	-0.5%	-0.3%	0.0%	-0.3%	-0.5%	-0.5%	1.0%
Sep-12	0.5%	0.0%	1.4%	0.0%	0.1%	2.7%	0.2%	-0.3%	-0.5%	-0.2%	-0.1%	-0.3%	0.0%	-0.3%	0.9%
Oct-12	0.6%	0.0%	1.5%	0.1%	0.1%	2.7%	0.2%	-0.3%	-0.5%	-0.2%	-0.1%	-0.2%	-0.1%	-0.3%	0.9%

Note: This table shows the contribution of each component over the trailing 12 months. The Divisia index is a chain-weighted calculation, based on growth-rates and weights relative to the prior months. This table shows the 12-month moving average of the monthly contributions. These calculations on this page are based on continuous annual percent changes (using natural logs).

*Sweeps adjusted.



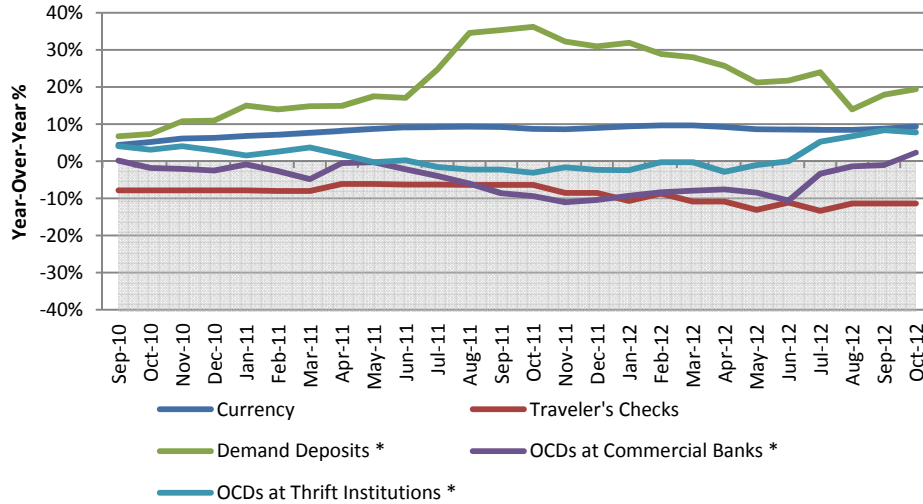
CENTER FOR FINANCIAL STABILITY

Dialog • Insight • Solutions

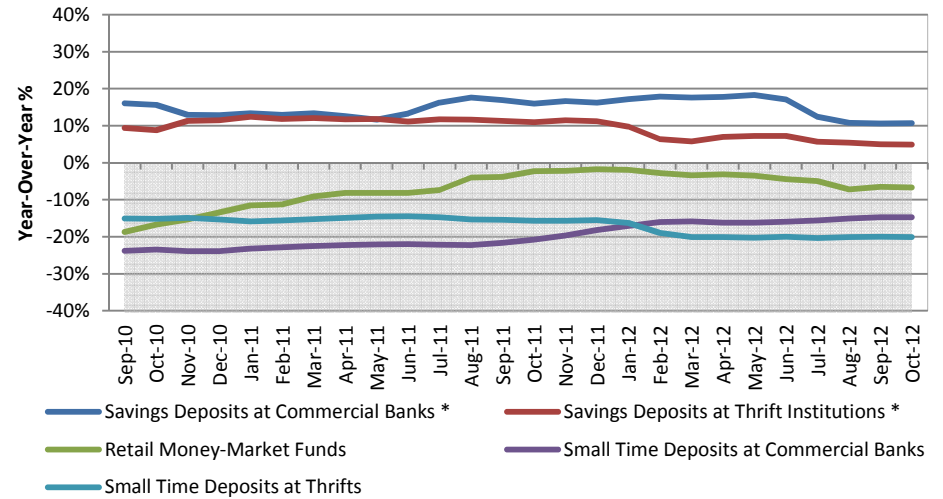
Figure 15 - Unweighted Components of CFS Divisia M4 (Year-Over-Year Growth Rates)

All charts share the same vertical axis range for comparison purposes. Gray area highlights negative growth.

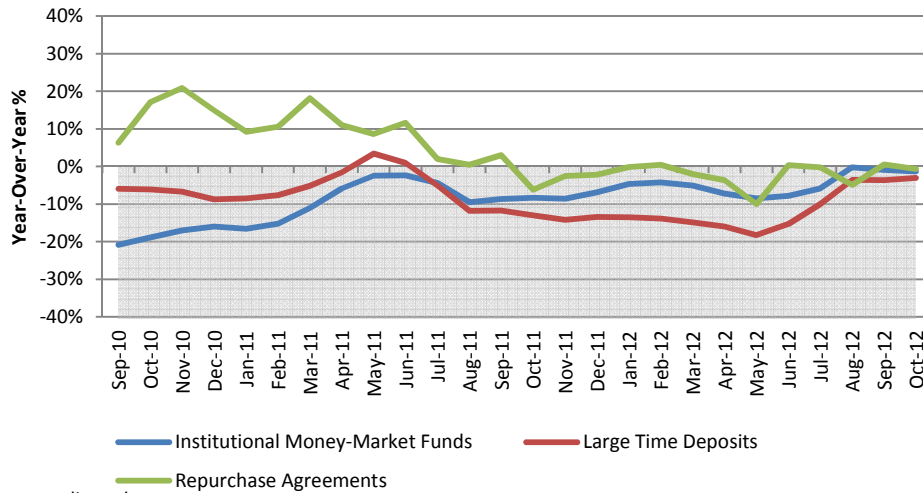
DM1 Components



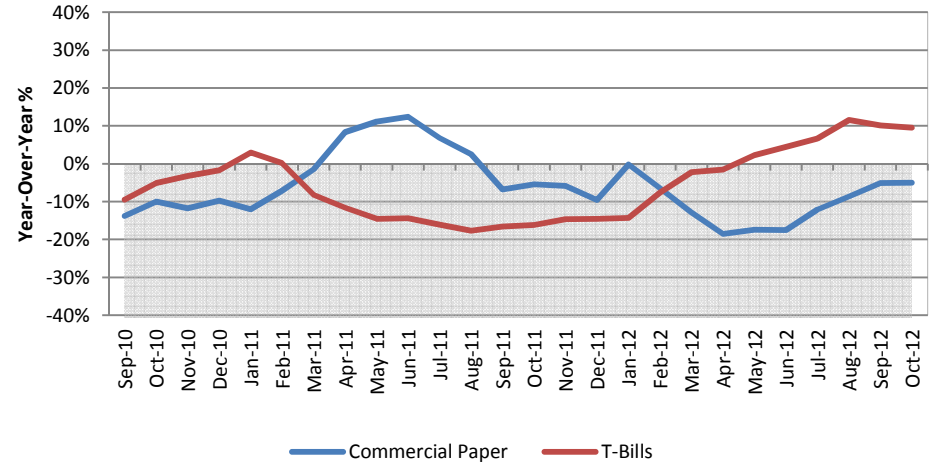
Additional DM2 Components (That Are Not in DM1)



Additional DM3 Components (That Are Not in DM2)



Additional DM4 Components (That Are Not in DM3)



* Sweeps adjusted.



CENTER FOR FINANCIAL STABILITY

Dialog • Insight • Solutions

Introduction to CFS Divisia Monetary Aggregates

Conventional money-supply measures are not adjusted to account for differences in the degree to which various assets actually serve as money, and hence implicitly assume that all assets in the aggregates contribute equally to the economy's monetary services. This assumption has not been reasonable since monetary assets began yielding interest over a half century ago. Divisia measures, using a mathematical formula derived by the famous 20th-century French economist, Francois Divisia, are a weighted aggregate, providing a more accurate picture of what is really happening to the economy's monetary service flow. The growth-rate weights for each component asset are based on their expenditure shares, with expenditures within the shares evaluated with user-cost pricing. The user-cost prices measure the interest foregone by owning the asset in question, instead of the higher, expected, benchmark rate, defined to be the rate of return on pure investment capital, providing no monetary services.

When their components are properly weighted, the broadest monetary aggregates (DM3, DM4-, and DM4) are almost always the best monetary aggregates, with DM4 commonly being the most useful of the three. As a result, this report focuses on the broadest, CFS Divisia aggregate (DM4). See W. A. Barnett, "The Optimal Level of Monetary Aggregation," *Journal of Money, Credit, and Banking*, November 1982.⁶ But we nevertheless provide the narrower CFS Divisia aggregates for comparison.

The CFS Divisia indexes in this release were developed by Professor William A. Barnett, based on his decades of work studying and refining Divisia measures of money supply, in accordance with the latest advances in economic measurement, modern economic aggregation theory, and state-of-the-art economic index-number theory. The Divisia formula for aggregating over imperfect substitutes was adapted for monetary and financial aggregation by W. A. Barnett in his seminal paper, "Economic Monetary Aggregates: An Application of Index Number and Aggregation Theory," *Journal of Econometrics*, September 1980, pp. 6-10.⁷ For more information about the history and methodology in this large literature, see <http://www.centerforfinancialstability.org/amfm.php>.

We consider the St. Louis Fed's MSI (monetary services index) Divisia aggregates to be an admirable and important contribution to public information, and we are indebted to the St. Louis Fed for helping us develop our Divisia monetary aggregates. Our narrowest Divisia monetary aggregates are similar to the St. Louis Fed's MSI Divisia aggregates, which are available only as narrow aggregates. However, we use a different benchmark interest-rate assumption, based on the recently introduced Bank of Israel formula. Since the Divisia quantity-index formula is relatively robust to the benchmark rate,

⁶ Reprinted in W. A. Barnett and A. Serletis, *The Theory of Monetary Aggregation*, Elsevier, 2000, chapter 7, pp. 125-149. Also see W. A. Barnett, *Getting It Wrong: How Faulty Monetary Statistics Undermine the Fed, the Financial System, and the Economy*, MIT Press, 2012, section 4.4, pp. 143-144.

⁷ Reprinted in W. A. Barnett and A. Serletis, *The Theory of Monetary Aggregation*, chapter 2, pp. 11-48. Also see W. A. Barnett, *Getting It Wrong: How Faulty Monetary Statistics Undermine the Fed, the Financial System, and the Economy*, appendix A, pp. 159-215.



CENTER FOR FINANCIAL STABILITY

Dialog • Insight • Solutions

the CFS narrow Divisia quantity indexes can be expected usually to behave similarly to the St. Louis Fed's MSI Divisia aggregates; but the CFS and St. Louis Fed's corresponding user-cost price aggregates behave very differently. For more information about the St. Louis Fed's MSI, see <http://research.stlouisfed.org/msi/> and <http://research.stlouisfed.org/fred2/release?rid=62&soid=4>.

The broad Divisia monetary aggregates, DM3, DM4-, and DM4, are available only from the CFS, since no other source currently exists for broad Divisia monetary aggregates for the US.

CFS Divisia Resources on the Center for Financial Stability Site

See www.centerforfinancialstability.org/amfm.php for more information about the following topics:

- Introduction to Advances in Monetary and Financial Measurement (Divisia)
- Monetary Data for the US: including methodology, data sources, and key takeaway points
- International Advances in Monetary and Financial Measurement: Divisia and Fisher-ideal monetary aggregates for a vast number of countries throughout the world
- Library: Key articles and books regarding advances in monetary and financial measurement

About the Center for Financial Stability

The Center for Financial Stability is an independent, nonpartisan, and nonprofit think tank dedicated to financial markets for the benefit of investors, officials, and the public.

CFS balances the big picture and financial market mechanics; serves as a private sector check on government actions; integrates finance, law, and economics; and supplements research with a community of public officials, academics, and market participants.

The organization's website is www.CenterforFinancialStability.org.

For more information about CFS Divisia please contact:

William A. Barnett	(Methodology)	(212) 626-2660	wbarnett@the-cfs.org
Lawrence Goodman	(Application)	(212) 626-2660	lgoodman@the-cfs.org

CFS Divisia Team: Jeff van den Noort (Chief Technology Officer), LeAnn Yee (Manager of Communications), Ryan Mattson (Research Associate), and Jia Liu (Research Associate).

With appreciation to Steve Hanke, Special Counselor at the CFS, for introducing Bill Barnett to the CFS.

The Center for Financial Stability (CFS) is a private, nonprofit institution focusing on global finance and markets. Its research is nonpartisan. This publication reflects the judgments and recommendations of the author(s). They do not necessarily represent the views of members of the CFS Advisory Board or Trustees, whose involvement in no way should be interpreted as an endorsement of the report by either themselves or the organizations with which they are affiliated.

© Center for Financial Stability 2012. All rights reserved.

1120 Avenue of the Americas, 4th Floor New York, NY 10036 T 212.626.2660 www.centerforfinancialstability.org